



Community District Education Council 26

New York City Department of Education

Address: 61-15 Oceania Street, Bayside, NY 11364 Phone: (718) 631-6927 Fax: (718) 631-1347 E-mail: CEC26@schools.nyc.gov.

Alan Ong (Borough Appointee) <i>President of the Council</i>	Wendy Pelle-Beer <i>First Vice President</i>	Roy Mendez <i>Second Vice President</i>	Leslie Rubenstein <i>Recording Secretary</i>	Michelle Liu <i>Treasurer</i>
<i>Council Members:</i>				
Shajid Ali Mohammed	Bobby Thind	Danielle Giunta		
Dilip Nath	David Wong	Community Superintendent		
Evelyn Schechter (Borough Appointee)	Shengchao Yu	District 26		
Olivia Esposito (Student member)	Website: www.cdec26.org			

Community Education Council District 26 (CDEC26) Minutes

August 25, 2016

Location: M.S. 74 61-15 Oceania Street, Queens, NY 1136

Calendar Meeting

Calendar Meeting

Present: Alan Ong (President), Roy Menendez (First Vice President), Bobby Thind (Second Vice President), Leslie Rubenstein (Recording Secretary), Michelle Liu (Treasurer), Evelyn Schechter, Shengchao Yu

Absent: David Wong (excused), Shajid Ali Mohammed (unexcused), Wendy Pelle-Beer (unexcused), Dilip Nath (unexcused)

Also Present: Danielle Giunta, Superintendent District 26, Kim D'Angelo, and Family Support-Coordinator.

Called to order at: 7:05. Roll call.

Superintendent's Report:

- **Presentation of District 26 Data.**
 - All subsets of students are outperforming NYS and NYC average performance in both ELA and Mathematics on State Tests.
 - NYC School Survey
 - Response rate for parents declined significantly.
 - Student satisfaction declined from 81% to 75%. However, the gap between elementary and middle school rates of satisfaction closed.
- **District Leadership Team drafted Comprehensive Educational Plan for 2016-2017-Goals include:**
 - Rigorous Instruction: Working towards ensuring equity and excellence for all; closing gaps between subgroups on proficiency standards, including embedding Chancellor's initiatives (Algebra for all, computer classes, etc.)
 - Supportive Environment: SEL programs
 - Collaborative Teachers: Provide differentiated professional learning opportunities.
 - Effective School Leadership: continuing programs that support assistant principals, principals and student council presidents.
 - Strong Family and Community Ties: Parent D26 Challenge for parents around the district to get involved in at least one way in their school; -professional learning sessions for PCs.

- Five new principals have been placed at the schools where principals had either retired or were promoted to district level positions. All of them have begun outreach to the community members.
- Summer enrichment program was very successful; parent workshops ran simultaneously, which were well attended. August “meet and greet” for D26 parents took place; tickets for D26 Mets outing will be distributed at the start of the school year.
- Annual Student Leadership Training will be on Thursday, September 29th beginning at 4 p.m. at Martin Van Buren High School.
- **July Minutes**
Bobby Thind made a motion to approve the July minutes. Evelyn Schechter seconded the motion. All voted in favor of approving the minutes.
- **Public Comments**
 - Assemblywoman Nily Rozic announced additional funds for capital improvements and asked the CDEC to spread the word and ask schools to submit requests for capital improvement.
 - Jim Gallagher reminded everyone of the U.S. Tennis Open and the Arthur Ashe Kids Day.

Roy Menendez made a motion to adjourn. Shengchao Yu seconded the motion. All in favor. The meeting adjourned at 7:50.

Community Education Council District 26 (CDEC26) Minutes
August 25, 2016
Location: M.S. 74 61-15 Oceania Street, Queens, NY 1136
Business Meeting

Business Meeting

Present: Alan Ong (President), Roy Menendez (First Vice President), Bobby Thind (Second Vice President), Leslie Rubenstein (Recording Secretary), Michelle Liu (Treasurer), Evelyn Schechter, Shengchao Yu

Absent: David Wong (excused), Shajid Ali Mohammed (unexcused), Wendy Pelle-Beer (unexcused), Dilip Nath (unexcused)

Also Present: Danielle Giunta, Superintendent District 26, Kim D’Angelo,

Meeting was called to order at 7:50. Roll call.

President’s Report:

- Chancellor Farina will be hosting a Town Hall on Tuesday, September 27th at 6:30 at MS74.
 - Discussion of parameters for the Town Hall meeting were discussed.
- Calendar Changes
 - Bobby made a motion to approve September 27 as the date for the CDEC meeting. Leslie seconded the motion. All approved.
 - Bobby made a motion to approve May 11th as the date for the May meeting and Ballroom Dance. Evelyn seconded the motion. All approved.

Evelyn Schechter asked to revisit the rezoning for middle schools in District 26 at a later meeting this year.

Shengchao Yu made a motion to adjourn. Evelyn Schechter seconded the motion. All in favor. The meeting adjourned at 8:15.

Absences:

David Wong:

Hi,

Sorry, it turns out I will not be able to attend this meeting after all...my uncle just passed away and my flight to the funeral is Thursday, Aug 23rd. Please find attached a copy of my flight itinerary:

Shajid Ali-Muhammad: Notified CDEC26 President Alan Ong

To: M S Ali

Cc: Cec26 D26

Subject: Re: Not back from vacation.

Ok Shajid. U fortunately it'll be an unexcused absence.

Enjoy your vacation.

Sent from my iPhone

On Aug 25, 2016, at 6:33 PM, M S Ali <shajidali@gmail.com> wrote:

Ela& Math Presentation:

District 26 ELA and Mathematics Results 2015-16



Danielle Giunta, Superintendent

August 2016

**New York State
Education
Department
Accountability
Status**

REWARD SCHOOLS FOR 2016-17	
NAME	REWARD SCHOOL
PS 26 RUFUS KING	High Performing
PS 31 BAYSIDE	High Performing
PS 41 CROCHERON	High Performing
PS 46 ALLEY POND	High Performing
JHS 74 NATHANIEL HAWTHORNE	High Performing
PS 98 DOUGLASTON SCHOOL (THE)	High Performing
PS 159	High Performing
PS 162 JOHN GOLDEN	High Performing
PS 173 FRESH MEADOW	High Performing
PS/IS 178 HOLLISWOOD	High Performing
PS 186 CASTLEWOOD	High Performing
PS 203 OAKLAND GARDENS	High Performing
PS 205 ALEXANDER GRAHAM BELL	High Performing
PS 213 CARL ULLMAN SCHOOL (THE)	High Performing
PS 221 NORTH HILLS SCHOOL (THE)	High Performing

“Excellence
is not a destination;
it is a continuous
journey that
never ends.”

Brian Tracy



New York City District Rankings for ELA & Mathematics

ELA

district	%
2	66.4
26	65.5
3	56.3
25	52.9
15	50.1
20	48.7
21	48.5
30	44.0
31	43.8
22	43.4
28	42.5
1	42.1
24	39.6
27	37.3
13	36.5
14	34.4
29	33.2
4	31.8
18	31.2
17	30.2
11	28.9
32	27.2
6	27.1
8	25.6
10	25.2
16	24.8
19	22.7
5	21.5
9	20.4
7	19.1
23	19.1
12	16.3

MATH

district	%
26	70.6
2	68.6
25	59.4
20	56.0
15	51.3
3	50.9
21	49.5
30	42.9
1	42.0
22	41.3
28	41.2
24	40.5
31	39.7
27	33.2
13	30.3
14	29.7
4	27.8
17	27.0
11	25.9
29	25.8
6	24.3
10	23.3
18	23.1
8	22.3
16	20.8
32	20.2
9	18.0
19	18.0
5	16.6
7	15.6
23	15.1
12	14.7



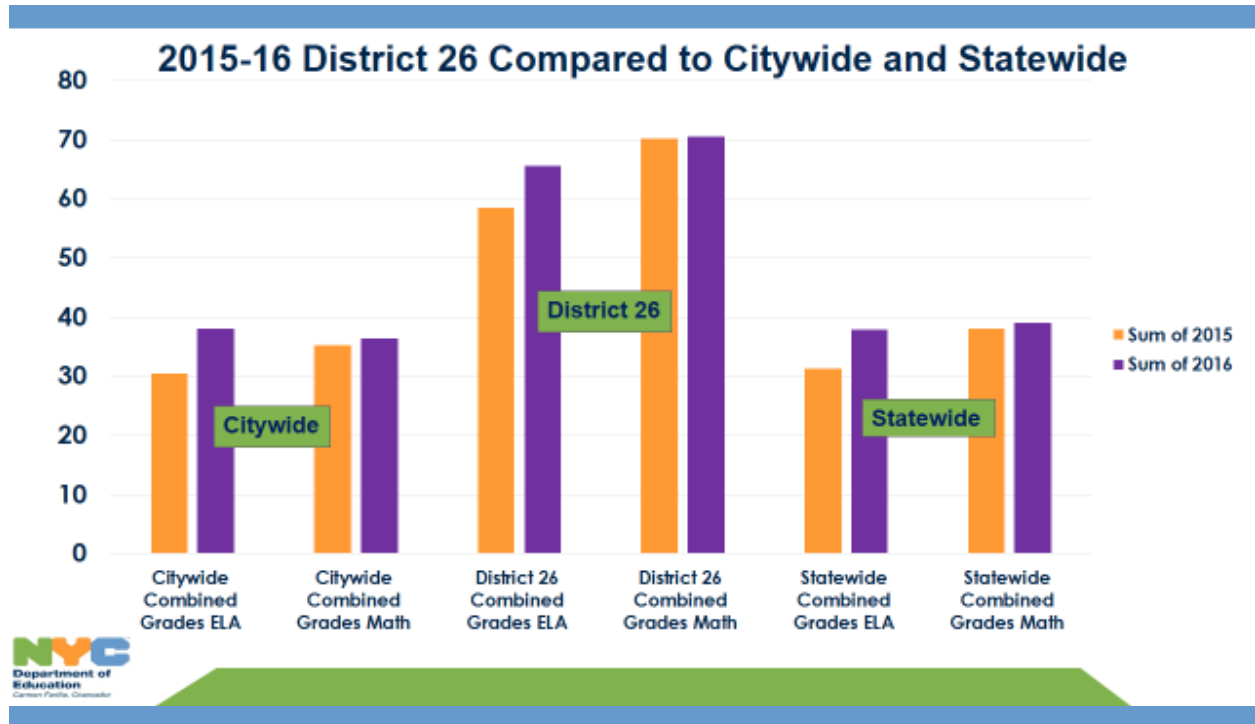
2016 Summary Statewide

- In ELA this year, the percentage of all test takers in grades 3-8 who scored at the proficient level (Levels 3 and 4) went up by 6.6 percentage points to 37.9, up from 31.3 in 2015.
- In math, the percentage of all test takers who scored at the proficient level increased this year to 39.1, up one percentage point from 38.1 in 2015.
- Given the numerous changes in the tests, we cannot pinpoint exactly why the test scores increased

% of Students Proficient in Grades 3-8			
	2015	2016	Percentage Change
Statewide Combined Grades ELA	31.3	37.9	6.6
Statewide Combined Grades Math	38.1	39.1	1

2015-16 District 26 Compared to Citywide and Statewide

% of Students Proficient in Grades 3-8			
	2015	2016	Percentage Change
District 26 Combined Grades ELA	58.5	65.6	7.1
Statewide Combined Grades ELA	31.3	37.9	6.6
Citywide Combined Grades ELA	30.4	38	7.6
District 26 Combined Grades Math	70.26	70.58	0.3
Statewide Combined Grades Math	38.1	39.1	1
Citywide Combined Grades Math	35.2	36.4	1.2



Comparing Queens North Districts

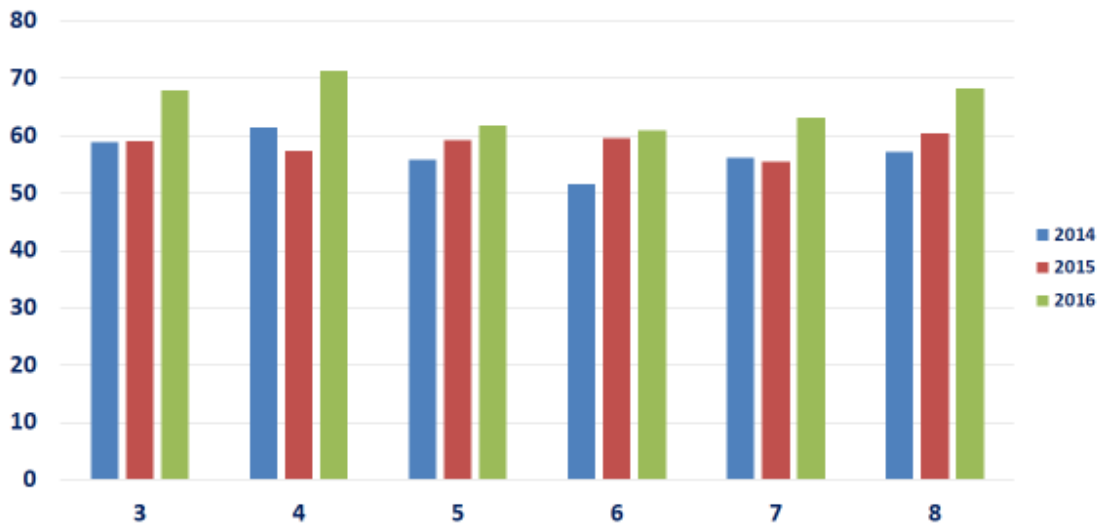
ELA Results Comparing 2015 to 2016 Grades 3-8 (% of students receiving a score of 3 or 4)			
District	2015 % of 3s and 4s	2016 % of 3s and 4s	+/- % Difference
District 24	32.8%	39.6%	+6.8%
District 25	43.2%	52.9%	+9.7%
District 26	58.5%	65.5%	+7.0%
District 30	34.5%	44.0%	+9.5%

Math Results Comparing 2015 to 2016 Grades 3-8 (% of students receiving a score of 3 or 4)			
District	2015 % of 3s and 4s	2016 % of 3s and 4s	+/- % Difference
District 24	40.1%	40.5%	+0.4%
District 25	57.8%	59.4%	+1.6%
District 26	70.3%	70.6%	+0.3%
District 30	42.4%	42.9%	+0.5%

Let's look at ELA
in more detail!



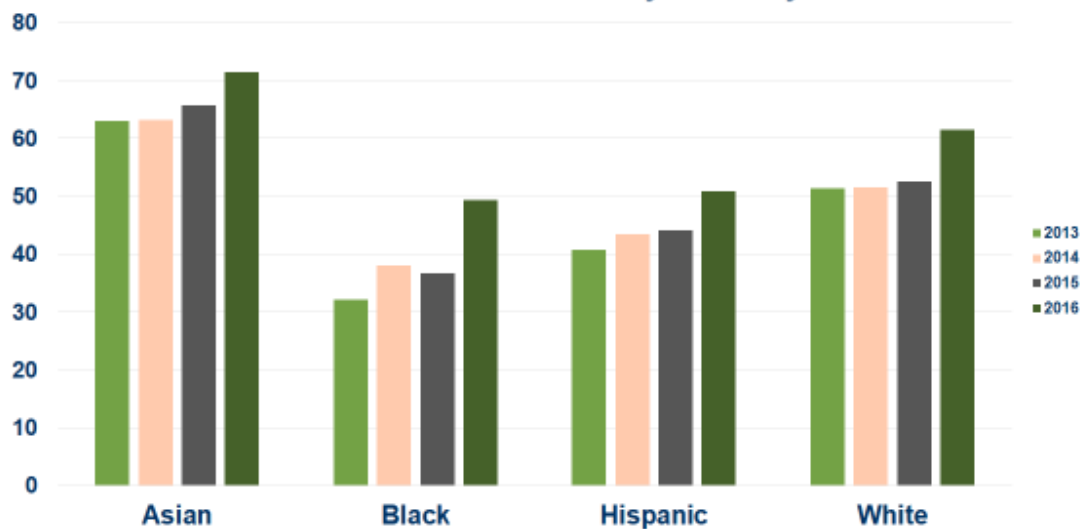
NYS 2016 D26 ELA Results By Grade



D26 ELA Results Compared to City and State

	Grade 3	Grade 4	Grade 5	Grade 6	Grade 7	Grade 8
District 26	67.9	71.3	61.9	61.0	63.2	68.3
NYC	40.9	41.4	34.1	34.7	36.0	40.5
NY State	41.9	40.8	33.5	34.4	35.5	40.9

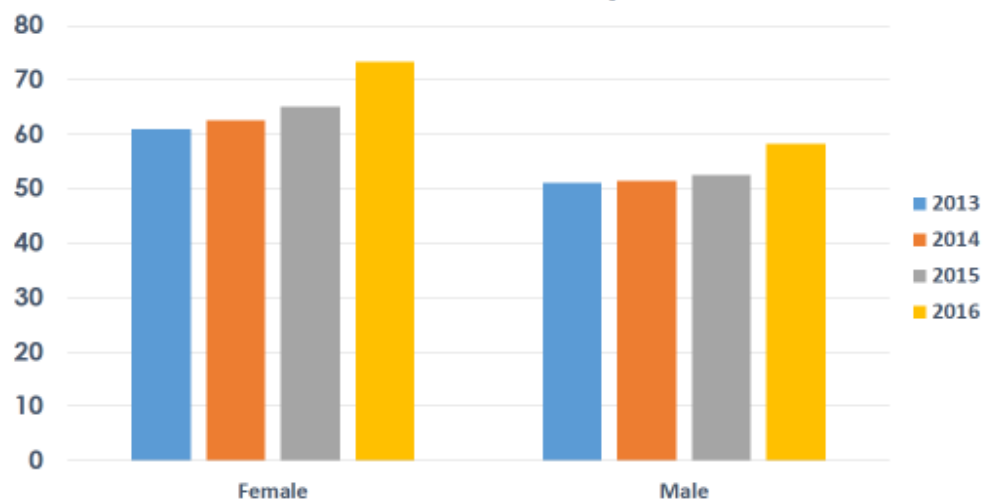
D26 NYS ELA Results By Ethnicity



D26 ELA Ethnic Subgroup Results Compared to NYC and NYS

	Asian	Black	Hispanic	White
District 26	71.5	49.3	50.9	61.5
NYC	59.2	26.6	27.2	58.9
NY State	59.0	26.2	26.8	46.0

D26 NYS ELA Results by Gender



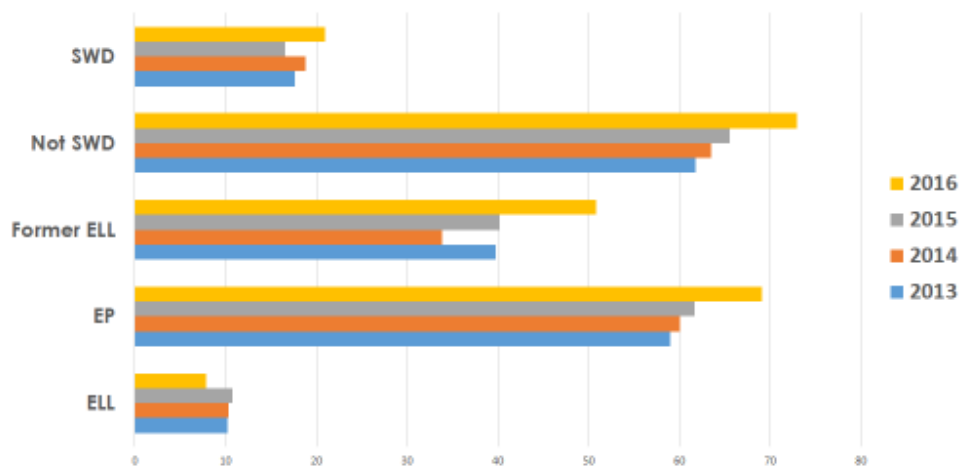
D26 ELA

Gender Subgroup Results Compared to NYC and NYS

	Female	Male
District 26	73.4	58.3
NYC	44.0	32.3
NY State	43.9	32.2

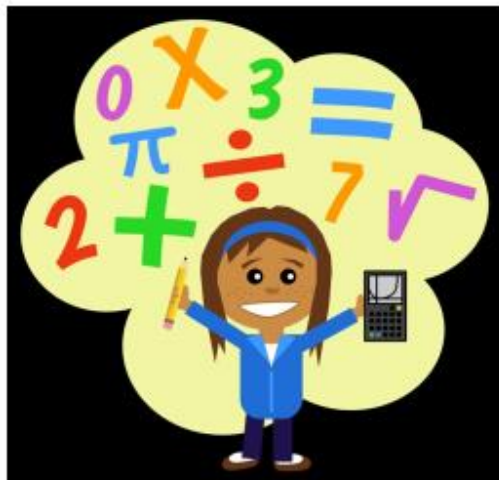


D26 NYS ELA Results by Subgroup SWDs and ENLs



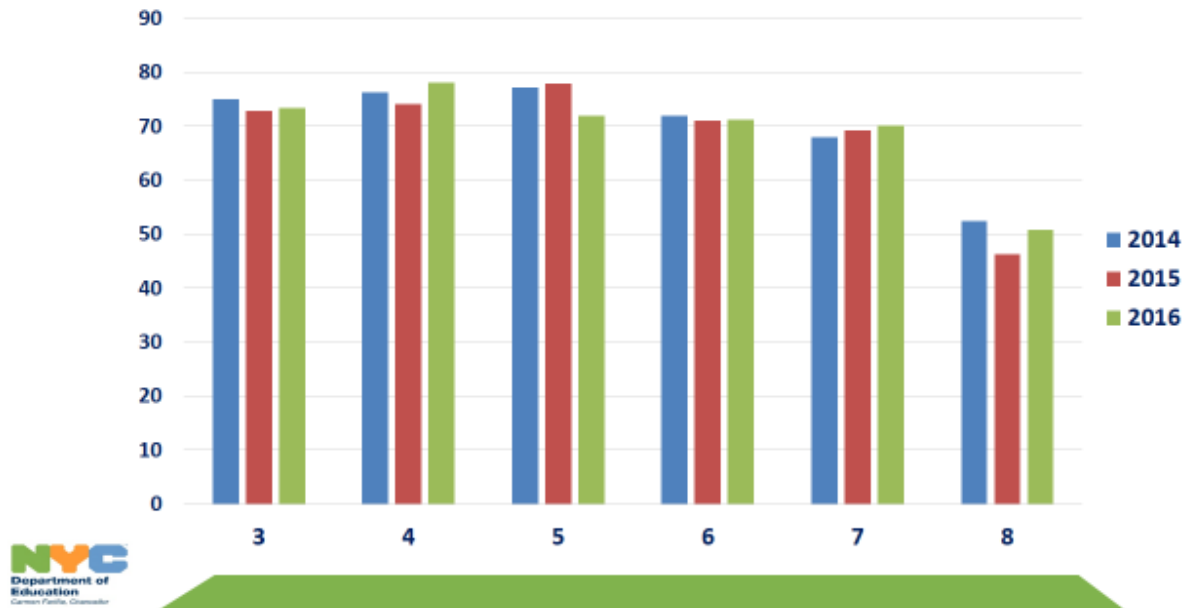
D26 ELA Subgroup Results Compared to City and State

	SWD	Non-SWD	ENLs	English Proficient
District 26	30.5	77.5	42.4	72.5
NYC	9.3	46.0	4.4	37.0
NY State	7.9	44.1	4.0	40.8



Let's look at
Mathematics in
more detail!

NYS D26 Math Results By Grade



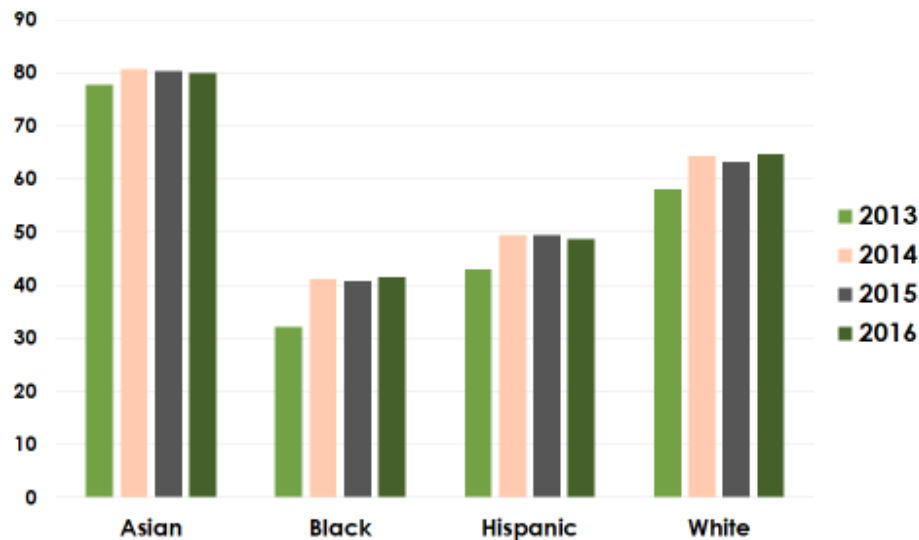
D26 Mathematics Results Compared to City and State

	Grade 3	Grade 4	Grade 5	Grade 6	Grade 7	Grade 8
District 26	73.3	78.1	72.0	71.2	70.2	50.7
NYC	41.0	41.4	37.5	36.9	34.0	25.0
NY State	44.1	44.7	40.1	40.1	35.9	23.8

MS Performance on Algebra Regents

DBN	Exam Name	Enrolled in CC Algebra			Sat for Exam			Passed	
		Total	Cohort Size	% of Cohort Registered	Total	Registered/ Sit Ratio	% of Cohort Sitting	Total	% Passing
26q067	Algebra	288	301	95.7%	256	88.9%	85.0%	246	96.09%
26q178	Algebra	57	64	89.1%	56	98.2%	87.5%	49	87.50%
26q158	Algebra	163	372	43.8%	161	98.8%	43.3%	160	99.38%
26q216	Algebra	198	472	41.9%	198	100.0%	41.9%	198	100.00%
26q266	Algebra	31	80	38.8%	31	100.0%	38.8%	31	100.00%
26q172	Algebra	131	341	38.4%	131	100.0%	38.4%	130	99.24%
26q074	Algebra	134	364	36.8%	134	100.0%	36.8%	134	100.00%

D26 2016 Grades 3-8 Math Results

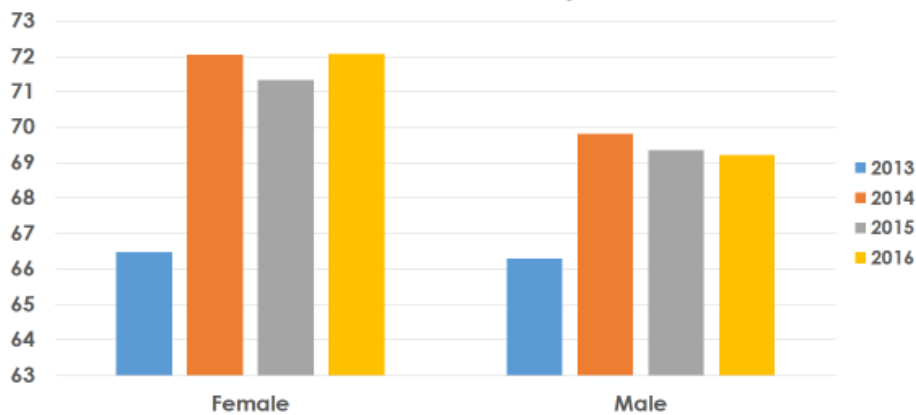


D26 Mathematics Ethnic Subgroup Results Compared to NYC and NYS

	Asian	Black	Hispanic	White
District 26	79.9	41.5	48.7	64.6
NYC	67.8	20.0	24.3	57.8
NY State	66.5	23.0	25.7	50.0



D26 NYS Math Results By Gender

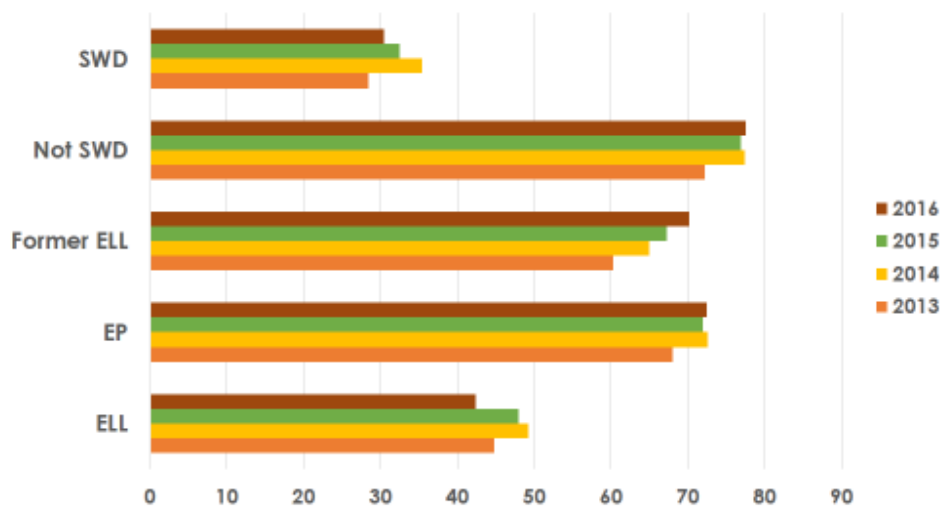


D26 Mathematics Gender Subgroup Results Compared to NYC and NYS

	Female	Male
District 26	72.1	69.2
NYC	37.3	35.6
NY State	39.6	38.6



D26 2016 Math Results for Subgroups
SWD and ENL



D26 Mathematics Subgroup Results Compared to City and State

	SWD	Non-SWD	ENLs	English Proficient
District 26	30.5	77.5	42.4	72.5
NYC	11.4	43.4	13.0	34.6
NY State	10.9	45.0	11.5	41.7



District 26 NYC School Survey Averages

Year	Total Parent Response Rate	Total Teacher Response Rate	Total Student Response Rate
2015	58%	79%	97%
2016	43%	77%	97%

Percent Satisfaction	Parent	Student	Teacher
2015	92%	81%	91%
2016	94%	75%	88%



Percent Satisfaction	Collaborative Teachers	Effective School Leadership	Rigorous Instruction	Strong Family-Community Ties	Supportive Environment	Trust
2015	91%	84%	92%	84%	94%	92%
2016	88%	89%	89%	93%	87%	90%



District 26 Compared to Citywide Results on the Framework on the NYC School Survey

	Percent Satisfaction: Parent	Percent Satisfaction: Student	Percent Satisfaction: Teacher
District 26	94%	75%	88%
D26 Elem.	94%	N/A	88%
D26 MS	93%	75%	88%

	Percent Satisfaction: Collaborative Teachers	Percent Satisfaction: Effective School Leadership	Percent Satisfaction: Rigorous Instruction	Percent Satisfaction: Strong Family-Community Ties	Percent Satisfaction: Supportive Environment	Percent Satisfaction: Trust
District 26	88%	89%	89%	93%	87%	90%
D26 Elem.	88%	89%	89%	93%	87%	90%
D26 MS	87%	88%	89%	93%	86%	89%



Draft DCEP Goals for 2016-17

Rigorous Instruction	Supportive Environment	Collaborative Teachers	Effective School Leadership	Strong Family-Community Ties
By June 2017, the District 26 Leadership Team will collaborate with district and Borough Field Support Center (BFSC) staff to ensure "equity and excellence for all" by ensuring that all students have access to engaging and rigorous instruction designed to meet the demands of the 21st century as measured by improvement on standardized NYS tests and authentic assessments.	By June 2017, the District 26 Leadership Team will collaborate with district and BFSC staffs and schools to make significant progress in ensuring a classroom and school culture where students feel engaged, safe, supported, and challenged by their teachers and peers with a focus on improving social-emotional learning and students' academic and personal behaviors as evidenced by an increase in overall satisfaction on School Survey responses around "Supportive Environment."	By June 2017, the District 26 Leadership Team will collaborate with the Borough Field Support Center (BFSC) and schools to strengthen teacher collaboration schoolwide with a focus on improving school, district, and citywide initiatives, as well as strengthen teacher practice and embed distributive leadership structures as evidenced by differentiated professional learning and the use of data to inform decision-making leading to an increase in schools scoring a "proficient" or "well developed" on Quality Review or PPO indicator 4.2.	By June 2017, the District 26 Leadership Team will collaborate with the BFSC and schools to improve effective school leadership practices that support the professional growth of teachers and staff, developing and delivering the instructional and social-emotional support that drives student achievement by supporting differentiated and diversified leadership needs at all levels as measured by an overall improvement in the area of "Effective School Leadership" on the NYC School Survey.	By June 2017, the District 26 Leadership Team, Superintendents' Teams, and BFSC will support a welcoming environment for families by developing partnerships with families, businesses, and community based organizations, by creating professional learning sessions for parent coordinators and parent/community leaders that build their capacity to understand and communicate the instructional and social-emotional learning that supports the development of academic and personal behaviors which will improve parents' abilities to support their children's achievement and advocate for support services, as measured by related responses on the School Survey.